

tweeDEseq: analysis of RNA-seq data using the Poisson-Tweedie family of distributions

Mikel Esnaola¹
mesnaola@creal.cat

Robert Castelo^{2,3}
robert.castelo@upf.edu

Juan Ramón González^{1,2,3}
juanr.gonzalez@isglobal.org

October 24, 2023

¹Centre for Research in Environmental Epidemiology (CREAL), Barcelona, Spain

<http://www.creal.cat/jrgonzalez/software.htm>

²Dept. of Experimental and Health Sciences, Research Program on Biomedical Informatics (GRIB),

Universitat Pompeu Fabra, Barcelona, Spain

³Hospital del Mar Research Institute (IMIM), Barcelona, Spain

1 Getting started

This document gives an overview of the R package **tweeDEseq**, which provides statistical procedures for testing differential expression in RNA-seq count data. In fact, these procedures could be applied, in principle, to any kind of count data, other than RNA-seq. The **tweeDEseq** package offers a function for normalizing count data which actually calls other functions for that purpose from the **edgeR** package. For this reason, it is necessary to have installed the **edgeR** package as well, although it is not necessary to explicitly load it onto the session. Another package necessary for running this vignette is the **tweeDEseqCountData** package which contains data to illustrate the analyses and which is employed in the article introducing **tweeDEseq** by Esnaola et al. (2013). Therefore, we should start the R session with loading these libraries as follows:

```
> library(tweeDEseq)
> library(tweeDEseqCountData)
```

We will start loading into the workspace the data corresponding to the initial table of raw counts of the RNA-seq experiment from Pickrell et al. (2010) on lymphoblastoid cell lines derived from 69 unrelated nigerian individuals as well as a vector of gender labels for each sample matching the sample order in the table of counts:

```
> data(pickrell)
> countsNigerian <- exprs(pickrell.eset)
> dim(countsNigerian)

[1] 52580    69

> countsNigerian[1:5, 1:5]
```

	NA18486	NA18498	NA18499	NA18501	NA18502
ENSG000000000003	0	0	0	0	0
ENSG000000000005	0	0	0	0	0
ENSG000000000419	22	105	40	55	67
ENSG000000000457	22	100	107	53	72
ENSG000000000460	5	23	10	18	15

```
> genderNigerian <- pData(pickrell.eset)[, "gender"]
> head(genderNigerian)
```

```
[1] male   male   female male   female male
Levels: female male
```

```
> table(genderNigerian)
```

```
genderNigerian
female   male
    40     29
```

2 Normalization and filtering

We proceed to normalize this initial table of raw counts in order to try to remove any technical biases that might be affecting the data. The `tweeDEseq` package relies for this purpose on part of the functionality provided by the `edgeR` package (comprising RNA composition adjustment by TMM (Robinson and Oshlack, 2010) and quantile-to-quantile count adjustment (Robinson et al., 2007) produced by the `equalizeLibSizes()` from `edgeR`) and offers one function (`normalizeCounts()`) that makes the appropriate calls to `edgeR` to normalize these data.

```
> countsNigerianNorm <- normalizeCounts(countsNigerian, genderNigerian)
```

```
> dim(countsNigerianNorm)
```

```
[1] 10231    69
```

If more control is needed in this step, the user should directly employ the corresponding `edgeR` functions. Next, we can filter out genes with very low expression using the function `filterCounts()` whose default parameters remove those genes with less than 5 counts per million in all samples but one.

```
> countsNigerianNorm <- filterCounts(countsNigerianNorm)
```

```
> dim(countsNigerianNorm)
```

```
[1] 10231    69
```

3 The Poisson-Tweedie family of distributions to model RNA-seq count data

The package `tweeDEseq` uses the Poisson-Tweedie (PT) family of distributions as the statistical model for count data. PT distributions have been studied by several authors (Hougaard et al., 1997; Gupta and Ong, 2004; Puig and Valero, 2006; El-Shaarawi et al., 2011) and unify several count data distributions (see **Fig. 1** in El-Shaarawi *et al.*, 2011) such as Poisson, negative binomial, Poisson-Inverse Gaussian,

Pólya-Aeppli or Neyman type A. These distributions can model different scenarios as, for instance, a RNA-seq expression profile with a wide dynamic range leading to a heavy tail in the distribution.

Following El-Shaarawi et al. (2011), let $Y \sim \text{PT}(a, b, c)$ be a PT random variable with vector of parameters $\theta = (a, b, c)^T$ defined in the domain

$$\Theta = (-\infty, 1] \times (0, +\infty) \times [0, 1). \quad (1)$$

For the sake of interpretability, we reparametrize $\theta = (a, b, c)$ to $\theta = (\mu, \phi, a)$, where μ denotes the mean, $\phi = \sigma^2/\mu$ is the dispersion index (σ^2 is the variance), and a the shape parameter that is employed to define some count data distributions that are particular cases of PT such as Poisson or Negative Binomial. The relationship between both parameterizations is the following:

$$c = \frac{\phi - 1}{\phi - a}, \quad b = \frac{\mu(1 - a)^{(1-a)}}{(\phi - 1)(\phi - a)^{-a}}. \quad (2)$$

Under this parametrization, the shape parameter determines the specific count data distribution being employed. For instance $a = 1$ corresponds to Poisson and $a = 0$ corresponds to negative binomial. We can estimate the parameter vector θ by maximum likelihood through the function `mlePoissonTweedie()` as follows:

```
> set.seed(123)
> y <- rnbinom(1000, mu=8, size=1/0.2)
> thetahat <- mlePoissonTweedie(y)
> getParam(tethahat)
```

```
      mu      D      a
8.0680000 2.6620193 0.0405573
```

where here we have simulated 1000 random observations from a negative binomial distribution and the last call to `getParam()` allows us to extract the $\hat{\theta}$ vector from the object return by `mlePoissonTweedie()`.

4 Goodness of fit to a count data distribution

The PT distribution allows one to test for the goodness of fit to a particular count data distribution defined by a specific value of the PT shape parameter a . For this purpose, the function `testShapePT()` allows us to test the goodness of fit to, for instance, the widely used negative binomial distribution (i.e., $H_0 : a = 0$) as illustrated here with the previously estimated vector $\hat{\theta}$:

```
> testShapePT(tethahat, a=0)

$statistic
[1] 0.01471032

$pvalue
[1] 0.9034644
```

These functions are called from another one called `gofTest()` which can perform for us a goodness-of-fit for every gene in the rows of a given matrix of counts, and will return the corresponding χ^2_1 statistics. Since calculating this for the entire gene set would take too long for building quickly this vignette we are going to work on a subset of genes formed by human genes with documented sex-specific expression, a sampled subset of 25 human housekeeping genes and the secretin (*SCT*) gene which encodes for an

endocrine hormone peptide in chromosome 11 that controls secretions in the duodenum. The gender-related and housekeeping gene lists form part from the previously loaded experimental data package `tweeDEseqCountData` and can be loaded as follows:

```
> data(genderGenes)
> data(hkGenes)
> length(XiEgenes)

[1] 63

> length(msYgenes)

[1] 32

> length(hkGenes)

[1] 669
```

The list of genes with documented sex-specific expression was built by first selecting genes in chromosome X that escape X-inactivation (Carrel and Willard, 2005) and genes in the male-specific region of the Y chromosome (Skaletsky et al., 2003), and then filtering out those that do not occur in the initial table of counts with 52580 Ensembl genes. The list of housekeeping genes was retrieved from the literature (Eisenberg and Levanon, 2003) and then also filtered to keep only those genes that form part of the initial table of counts. The selection is finally done as follows:

```
> set.seed(123)
> someHKgenes <- sample(hkGenes, size=25)
> geneSubset <- unique(c("ENSG00000070031",
+                        intersect(rownames(countsNigerianNorm),
+                        c(someHKgenes, msYgenes, XiEgenes))))
> length(geneSubset)

[1] 41
```

Now, we calculate the goodness of fit to a negative binomial distribution for each of these 41 genes using the function `gofTest()`:

```
> chi2gof <- gofTest(countsNigerianNorm[geneSubset, ], a=0)
```

and we can examine the result by means of the quantile-quantile plots produced with the function `qqchisq()` and shown in Figure 1, which indicates that more than a 50% of the genes show a substantial discrepancy with the respect to the negative binomial distribution.

```
> par(mfrow=c(1,2), mar=c(4, 5, 3, 4))
> qq <- qqchisq(chi2gof, main="Chi2 Q-Q Plot", ylim = c(0, 60))
> qq <- qqchisq(chi2gof, normal=TRUE, ylim = c(-5, 7))
```

This indicates that different genes may require different count data distributions but, in fact, this can be also observed for different sample groups within the same gene. Figure 2 illustrates such a case with the secretin (*SCT*) gene (Ensembl ID ENSG00000070031) when looking separately to male and female samples. This figure is produced with the following code that calls the function `compareCountDist()` which helps in comparing an empirical distribution of counts against the Poisson, the negative binomial and the corresponding estimated PT distribution.

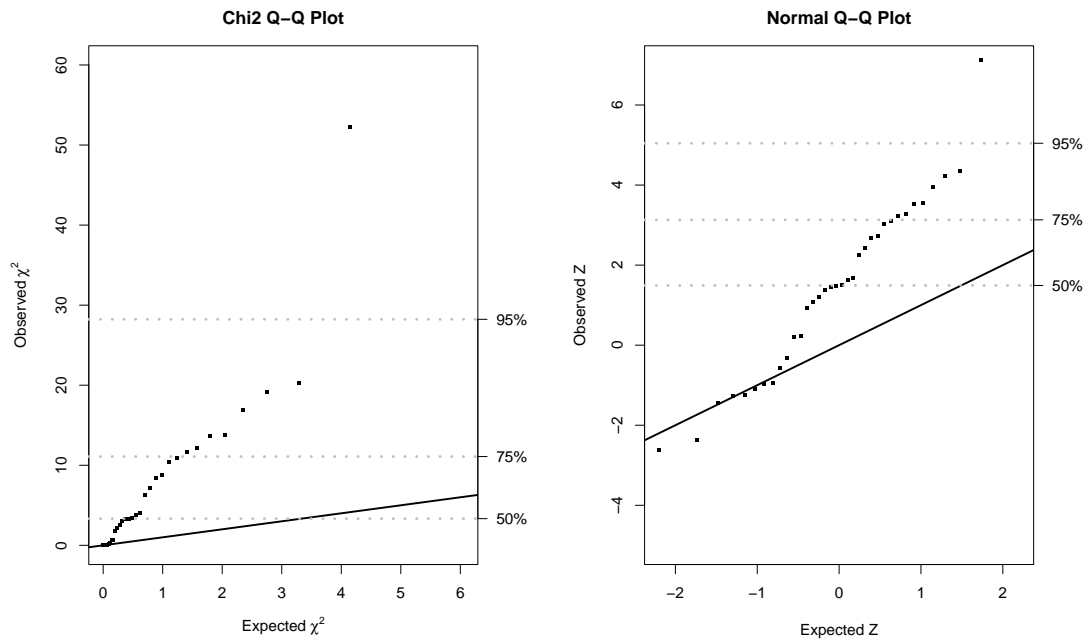


Figure 1. Goodness of fit to a binomial distribution. On the left a quantile-quantile plot of the χ^2 statistic employed to assess the goodness-of-fit of the RNA-seq data to a negative binomial distribution is shown. More than a 50% of the genes have expression profiles that depart substantially from the negative binomial distribution. On the right we have the same data but χ^2 statistics are transformed into standard normal z-scores to improve visibility of the lower quantiles.

```
> par(mfrow=c(1,2), mar=c(4, 5, 3, 2))
> xf <- unlist(countsNigerianNorm["ENSG00000070031", genderNigerian=="female"])
> compareCountDist(xf, main="Female samples")
> xm <- unlist(countsNigerianNorm["ENSG00000070031", genderNigerian=="male"])
> compareCountDist(xm, main="Male samples")
```

What Figure 2 reflects can be also easily seen by just looking to the actual counts and identifying the female sample that produces the heavy tail on the distribution

```
> sort(xf)

NA19137 NA18855 NA19127 NA19159 NA19225 NA19257 NA18508 NA18511 NA18858 NA18912
1 2 2 2 2 2 3 3 3 3
NA19102 NA19114 NA19116 NA18505 NA18909 NA19099 NA19140 NA19222 NA18517 NA18520
3 3 3 4 4 4 4 4 5 5
NA19131 NA19143 NA18523 NA18861 NA18870 NA19108 NA19152 NA19201 NA18499 NA19093
5 5 6 6 6 6 6 6 8 9
NA19147 NA18852 NA19209 NA18502 NA19238 NA19190 NA19204 NA18916 NA19172 NA19193
9 11 11 12 12 16 17 21 37 196

> sort(xm)
```



Figure 2. Empirical cumulative distribution function (CDF) of counts (black dots), calculated separately from male and female samples, for the secretin gene (*SCT*) and estimated CDF (solid lines) of Poisson-Tweedie distributions with shape parameter fixed to $a = 1$ corresponding to a Poisson (green), $a = 0$ corresponding to a negative binomial (blue) and with the value of a estimated from data too (red). The legend shows the values of the a parameter and the P value of the likelihood ratio test on whether the expression profile follows a negative binomial distribution ($H_0 : a = 0$). We can observe that for both, male and female samples, the Poisson distribution is not adequate and that the negative binomial distribution is not adequate for female samples.

NA18507	NA19128	NA19138	NA19160	NA19210	NA18510	NA19192	NA18498	NA18519	NA18522
1	1	1	1	1	2	2	3	3	3
NA18856	NA18862	NA18871	NA19239	NA18486	NA18853	NA18913	NA19153	NA19171	NA19098
3	3	3	3	4	4	4	4	4	6
NA18516	NA19101	NA18501	NA19130	NA18504	NA19200	NA19203	NA19119	NA19144	
7	7	8	8	9	11	15	18	30	

and realize that by just removing that sample, the large overexpression in females just vanishes:

```
> xf[which.max(xf)]
NA19193
196

> 2^{log2(mean(xf))-log2(mean(xm))}
[1] 2.003402
```

```
> 2^{log2(mean(xf[-which.max(xf)])) - log2(mean(xm))}
[1] 1.192384
```

This illustrates a case in which Poisson and negative binomial distributions may be too restrictive to account for the biological variability that extensively-replicated RNA-seq experiments can reveal in count data.

5 Testing for differential expression

In order to illustrate the accuracy of `tweeDEseq` for detecting DE genes in a extensively-replicated RNA-seq experiment we have compared the expression profiles between males and females from the population of 69 unrelated Nigerian individuals (Pickrell et al., 2010).

The `tweeDEseq` package contains a function to test for differential expression between two different conditions using a score based test: the `tweeDE()` function. This function takes as input a matrix of counts with genes on the rows and samples on the columns.

An important feature of the `tweeDE()` function is that it allows to use multiple processors in the computing process. This is done by loading first the `multicore` package and specifying the number of cores to be used with the `mc.cores` argument in the call to `tweeDE()`.

```
> resPT <- tweede(countsNigerianNorm[genesubset, ], group = genderNigerian)
```

The function `tweeDE()` returns a *data.frame* object of class *tweeDE* which can be examined with the `print()`:

```
> print(resPT)
```

Comparison of groups: male - female
Showing top 6 genes ranked by P-value
Minimum absolute log2 fold-change of 0
Maximum adjusted P-value of 1

	overallMean	female	male	log2fc	stat	pval
ENSG00000129824	186.942	3.275	440.276	7.070769	16.006051	1.159385e-57
ENSG00000154620	16.043	2.900	34.172	3.558707	11.319513	1.050535e-29
ENSG00000099749	31.464	3.550	69.966	4.300753	10.690576	1.126694e-26
ENSG00000198692	18.551	3.775	38.931	3.366372	9.717809	2.531693e-22
ENSG00000157828	7.507	1.875	15.276	3.026291	7.968633	1.604387e-15
ENSG00000006757	152.101	196.175	91.310	-1.103291	6.820705	9.059494e-12
	pval.adjust					
ENSG00000129824	4.753479e-56					
ENSG00000154620	2.153598e-28					
ENSG00000099749	1.539815e-25					
ENSG00000198692	2.594986e-21					
ENSG00000157828	1.315597e-14					
ENSG00000006757	6.190654e-11					

which will show us by default the top 6 genes ranked by *P*-value including information on the magnitude of the fold-change in log2 scale (`log2fc`), overall mean expression in counts (`overallMean`), mean expression in counts for each sample group, raw *P*-value (`pval`) and the Benjamini-Hochberg (FDR) adjusted *P*-value (`pval.adjust`).

The same `print()` function allows us to call differentially expressed a subset of gene meeting cutoffs on the minimum magnitude of the fold-change and maximum FDR and store that subset in a *data.frame* object by using the appropriate arguments as follows:

```
> deGenes <- print(resPT, n=Inf, log2fc=log2(1.5), pval.adjust=0.05, print=FALSE)
> dim(deGenes)

[1] 9 7
```

We can further enrich the output with information like the symbol and description of the gene by using the annotation information stored as a *data.frame* in the experimental data package `tweeDEseqCountData` as follows:

```
> data(annotEnsembl63)
> head(annotEnsembl63)
```

	Symbol	Chr	Start	End	EntrezID	Description	Length
ENSG00000252775	U7	5	133913821	133913880	<NA>		
ENSG00000207459	U6	5	133970529	133970635	<NA>		
ENSG00000252899	U7	5	133997420	133997479	<NA>		
ENSG00000201298	U6	5	134036862	134036968	<NA>		
ENSG00000222266	U6	5	134051173	134051272	<NA>		
ENSG00000222924	U6	5	137405044	137405147	<NA>		
ENSG00000252775	U7	small nuclear RNA	[Source:RFAM;Acc:RF00066]			NA	
ENSG00000207459	U6	spliceosomal RNA	[Source:RFAM;Acc:RF00026]			NA	
ENSG00000252899	U7	small nuclear RNA	[Source:RFAM;Acc:RF00066]			NA	
ENSG00000201298	U6	spliceosomal RNA	[Source:RFAM;Acc:RF00026]			NA	
ENSG00000222266	U6	spliceosomal RNA	[Source:RFAM;Acc:RF00026]			NA	
ENSG00000222924	U6	spliceosomal RNA	[Source:RFAM;Acc:RF00026]			NA	
		GCcontent					
ENSG00000252775		NA					
ENSG00000207459		NA					
ENSG00000252899		NA					
ENSG00000201298		NA					
ENSG00000222266		NA					
ENSG00000222924		NA					

```
> deGenes <- merge(deGenes, annotEnsembl63, by="row.names", sort=FALSE)
```

and select certain columns to build Table 1 using the `xtable` package (code not shown but available in the source of the vignette).

6 Visualizing the results

An informative way to visualize the results of a differential expression analysis is by means of MA and Volcano plots, which we can easily obtain through the `tweeDEseq` package functions `MAPlot()` and `Vplot()`, respectively as follows. Their result is shown in Figure 3.

```
> deGenes <- rownames(print(resPT, n=Inf, log2fc=log2(1.5), pval.adjust=0.05, print=FALSE))
> length(deGenes)
```


Table 1. Differentially expressed genes between female and male Nigerian individuals found by *tweeDEseq*.

Symbol	Chr	log2fc	pval.adjust	Description
RPS4Y1	Y	7.07	4.75E-56	ribosomal protein S4, Y-linked 1
TMSB4Y	Y	3.56	2.15E-28	thymosin beta 4, Y-linked
CYorf15A	Y	4.30	1.54E-25	chromosome Y open reading frame 15A
EIF1AY	Y	3.37	2.59E-21	eukaryotic translation initiation factor 1A, Y-linked
RPS4Y2	Y	3.03	1.32E-14	ribosomal protein S4, Y-linked 2
PNPLA4	X	-1.10	6.19E-11	patatin-like phospholipase domain containing 4
STS	X	-0.99	1.15E-04	steroid sulfatase (microsomal), isozyme S
HDHD1	X	-0.77	4.35E-04	haloacid dehalogenase-like hydrolase domain containing 1
UTY	Y	0.63	4.60E-02	ubiquitously transcribed tetratricopeptide repeat gene, Y-linked

[1] 9

```
> hl<- list(list(genes=msYgenes, pch=21, col="blue", bg="blue", cex=0.7),
+           list(genes=XiEgenes, pch=21, col="skyblue", bg="skyblue", cex=0.7),
+           list(genes=deGenes, pch=1, col="red", lwd=2, cex=1.5)
+           )
> par(mfrow=c(1,2), mar=c(4, 5, 3, 2))
> MAplot(resPT, cex=0.7, log2fc.cutoff=log2(1.5), highlight=hl, main="MA-plot")
> Vplot(resPT, cex=0.7, highlight=hl, log2fc.cutoff=log2(1.5),
+       pval.adjust.cutoff=0.05, main="Volcano plot")
```

7 Assessing differential expression calling accuracy

Finally, the accuracy of the differential expression analysis illustrated here can be assessed by comparing our list of differentially expressed genes with the list of genes with documented sex-specific expression by means of a Fisher's exact test.

```
> genderGenes <- c(msYgenes[msYgenes %in% rownames(resPT)],
+                  XiEgenes[XiEgenes %in% rownames(resPT)])
> N <- nrow(resPT)
> m <- length(genderGenes)
> n <- length(deGenes)
> k <- length(intersect(deGenes, genderGenes))
> t <- array(c(k,n-k,m-k,N+k-n-m), dim=c(2,2), dimnames=list(SEX=c("in","out"),DE=c("yes","no")))
> t

      DE
SEX   yes no
in    9  18
out   0  14

> fisher.test(t, alternative="greater")
```

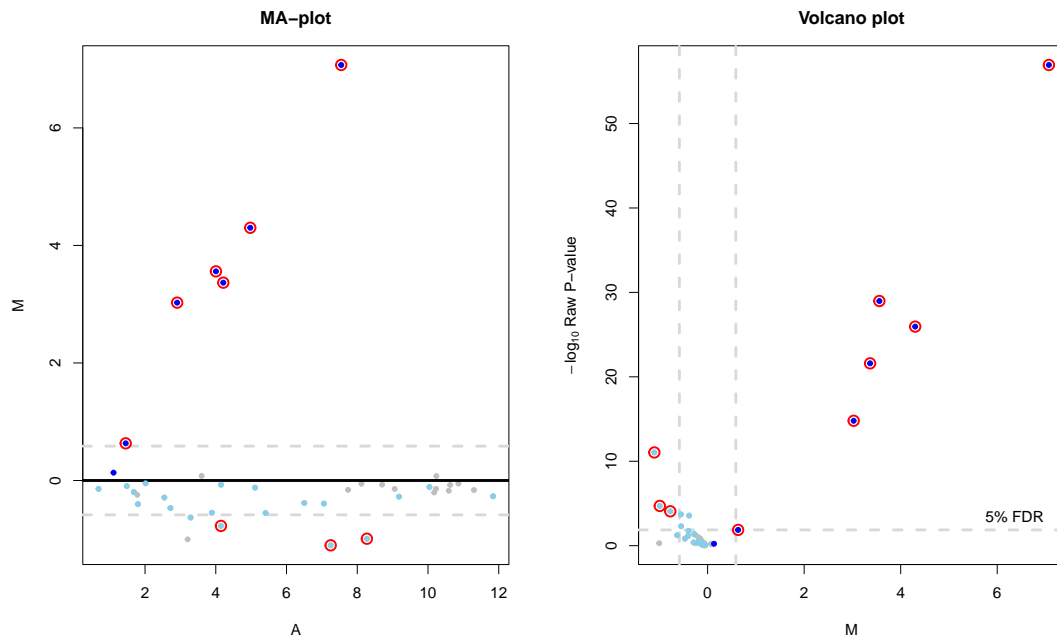


Figure 3. Differential expression analysis for a subset of genes between male and female lymphoblastoid cell lines. On the left a MA-plot shows the magnitude of the fold-change of every gene as function of its average normalized expression level. No expression-level dependent biases can be observed in the data. On the right a volcano plot shows the raw P value of every gene for the null hypothesis of no differential expression, calculated by tseeDEseq, as function of its fold-change. In both plots, red circles indicate differentially expressed genes defined by the cutoffs depicted with horizontal and vertical dashed lines. Light blue dots denote genes from the male-specific region (Skaletsky et al., 2003) of chromosome Y (MSY) and dark blue dots denote genes from Xi that escape chromosome inactivation (XiE) in female samples (Carrel and Willard, 2005).

Fisher's Exact Test for Count Data

```
data: t
p-value = 0.01338
alternative hypothesis: true odds ratio is greater than 1
95 percent confidence interval:
 1.632421      Inf
sample estimates:
odds ratio
      Inf
```

8 Fitting generalized linear models (GLM)

The `tweeDEseq` package also allows to fit generalized linear models for a response variable following the Poisson-Tweedie family of distributions and several covariates. This can be done using the `glmPT()` function. For instance, we can fit a model taking the secretin (*SCT*) gene as response and gender as covariate:

```
> mod <- glmPT(countsNigerianNorm["ENSG00000070031",] ~ genderNigerian)
> mod

Call:  glmPT(formula = countsNigerianNorm["ENSG00000070031", ] ~ genderNigerian)

Coefficients:
      (Intercept)  genderNigerianmale 
           2.2544             -0.2412 

Poisson-Tweedie parameters:
           c              a 
       0.997         0.8253 

> summary(mod)

Call:
glmPT(formula = countsNigerianNorm["ENSG00000070031", ] ~ genderNigerian)

Coefficients:
              Estimate Std. Error t value Pr(>|t|)
(Intercept)      2.2544     0.1918  11.7553  < 2e-16 ***
genderNigerianmale -0.2412     0.1622  -1.4874   0.93154
---
Signif. codes:  0 '***' 0.001 '**' 0.01 '*' 0.05 '.' 0.1 ' ' 1

Poisson-Tweedie parameters
      Estimate Std. Error
c      0.997     0.0019
a      0.8253     0.0427
```

The resulting model can also be used to test differential expression. This can be done using the `anova()` method, which tests whether the model is significantly better than the null one.

```
> anova(mod)

[1] 0.1435284
```

The `tweeDEglm()` allows testing several genes at the same time. This function also allows using multiple processors in the computing process. Following with the example in section 5, we apply it to the same subset of genes and use the gender as covariate:

```
> resPTglm <- tweeDEglm( ~ genderNigerian, counts = countsNigerianNorm[geneSubset,])
```

`tweeDEglm()` returns a `data.frame` with the *AIC* (Akaike Information Criterion) for the fitted and null models as well as the original and adjusted p-values resulting from the test between both models. In order to visualize the top significant genes we run the following command.

```
> head(resPTglm[sort(resPTglm$pval.adjust, index.return = TRUE)$ix,])
```

	AICfull	AICnull	pval	pval.adjust
ENSG00000129824	553.0737	759.2850	3.373761e-47	1.383242e-45
ENSG00000198692	412.7887	537.5054	2.142822e-29	4.392785e-28
ENSG00000154620	402.8749	518.1261	2.529103e-27	3.456440e-26
ENSG00000099749	481.4012	591.2299	3.895582e-26	3.992972e-25
ENSG00000157828	358.1338	421.8267	5.269581e-16	4.321056e-15
ENSG00000006757	764.8961	801.0417	6.565947e-10	4.486730e-09

If we compare these results with those obtained by the `tweedE()` function we observe that both methods place the same genes at the top of the most significant list. This is not surprising as, though the statistical tests are not identical, the underlying distributional assumptions are the same. In fact, `tweedEglm()` detects all the genes captured by `tweedE()`.

8.1 Incorporating CQN offsets

Package `cqn` (Hansen et al. (2012), available at Bioconductor) performs conditional quantile normalization in order to remove possibly existing bias arising from differences in GC content or gene lengths. The method returns a series of offsets which can be incorporated into `tweedEseq` via the `tweedEglm` or `glmPT` function.

For instance, suppose the result of the `cqn` normalization is stored in an object called `cqn.subset`¹. The normalizing offsets are stored as a matrix at `cqn.subset$offset`. They can be incorporated into the model using the 'offset' argument.

```
> tweedEglm(~ genderNigerian, counts = countsNigerianNorm[geneSubset,],
+ offset = cqn.subset$offset)
```

9 Session info

```
> sessionInfo()
```

```
R Under development (unstable) (2023-10-22 r85388)
Platform: x86_64-pc-linux-gnu
Running under: Ubuntu 22.04.3 LTS
```

```
Matrix products: default
```

```
BLAS: /home/biocbuild/bbs-3.19-bioc/R/lib/libRblas.so
```

```
LAPACK: /usr/lib/x86_64-linux-gnu/lapack/liblapack.so.3.10.0
```

```
locale:
```

```
[1] LC_CTYPE=en_US.UTF-8      LC_NUMERIC=C
[3] LC_TIME=en_US.UTF-8       LC_COLLATE=en_US.UTF-8
[5] LC_MONETARY=en_US.UTF-8   LC_MESSAGES=en_US.UTF-8
[7] LC_PAPER=en_US.UTF-8      LC_NAME=C
[9] LC_ADDRESS=C              LC_TELEPHONE=C
[11] LC_MEASUREMENT=en_US.UTF-8 LC_IDENTIFICATION=C
```

¹For more information about how to normalize RNA-seq count data using the `cqn` package, please refer to the package vignette available at <http://www.bioconductor.org/packages/release/bioc/html/cqn.html>

```

time zone: America/New_York
tzcode source: system (glibc)

attached base packages:
[1] stats      graphics  grDevices  utils      datasets  methods   base

other attached packages:
[1] xtable_1.8-4          tweedEseqCountData_1.39.2
[3] Biobase_2.63.0        BiocGenerics_0.49.0
[5] tweedEseq_1.49.0

loaded via a namespace (and not attached):
[1] lattice_0.22-5  norlrmix_1.3-0  splines_4.4.0  limma_3.59.0  parallel_4.4.0
[6] grid_4.4.0      statmod_1.5.0  compiler_4.4.0  tools_4.4.0   Rcpp_1.0.11
[11] locfit_1.5-9.8  cqn_1.49.0     edgeR_4.1.0    MASS_7.3-60.1

```

References

- Carrel, L. and Willard, H. (2005). X-inactivation profile reveals extensive variability in X-linked gene expression in females. *Nature*, 434:400–404.
- Eisenberg, E. and Levanon, E. Y. (2003). Human housekeeping genes are compact. *Trends Genet*, 19(7):362–5.
- El-Shaarawi, A., Zhu, R., and Joe, H. (2011). Modelling species abundance using the Poisson-Tweedie family. *Environmetrics*, 22:152–164.
- Esnaola, M., Puig, P., Gonzalez, D., Castelo, R., and Gonzalez, J. R. (2013). A flexible count data model to fit the wide diversity of expression profiles arising from extensively replicated rna-seq experiments. *BMC Bioinformatics*, 14:254.
- Gupta, R. and Ong, S. (2004). A new generalization of the negative binomial distribution. *Compu Stat Data An*, 45:287–300.
- Hansen, K. D., Irizarry, R. A., and Wu, Z. (2012). Removing technical variability in rna-seq data using conditional quantile normalization. *Biostatistics*.
- Hougaard, P., Lee, M.-L., and Whitmore, G. (1997). Analysis of overdispersed count data by mixtures of Poisson variables and Poisson processes. *Biometrics*, 53:1225–1238.
- Pickrell, J., Marioni, J., Pai, A., Degner, J., Engelhardt, B., Nkadori, E., Veyrieras, J., Stephens, M., Gilad, Y., and Pritchard, J. (2010). Understanding mechanisms underlying human gene expression variation with RNA sequencing. *Nature*, 464:768–772.
- Puig, P. and Valero, J. (2006). Count data distributions: Some characterizations with applications. *J Am Stat Assoc*, 101:332–340.
- Robinson, M. and Oshlack, A. (2010). A scaling normalization method for differential expression analysis of RNA-seq data. *Genome Biol*, page 11:R25.
- Robinson, M. D., Smyth, G. K., and Rocke, P. D. (2007). Moderated statistical tests for assessing differences in tag abundance.

Skaletsky, H., Kuroda-Kawaguchi, T., Minx, P., Cordum, H., Hillier, L., Brown, L., Repping, S., Pnytkova, T., Ali, J., Bieri, T., Chinwalla, A., Delehaunty, A., Delehaunty, K., Du, H., Fewell, G., Fulton, L., Fulton, R., Graves, T., Hou, S.-F., Latrielle, P., Leonard, S., Mardis, E., Maupin, R., McPherson, J., Miner, T., Nash, W., Nguyen, C., Ozersky, P., Pepin, K., Rock, S., Rohlfing, T., Scott, K., Schultz, B., Strong, C., Tin-Wollam, A., Yang, S.-P., Waterston, R., Wilson, R., Rozen, S., and Page, D. (2003). The male-specific region of the human y chromosome is a mosaic of discrete sequence classes. *Nature*, 423:825–837.