

Bioconductor's PADOG package

Adi L. Tarca^{1,2,3}

November 1, 2022

¹Department of Computer Science, Wayne State University

²Bioinformatics and Computational Biology Unit of the NIH Perinatology Research Branch

³Department of Obstetrics and Gynecology, Wayne State University

1 Overview

This package implements the *Pathway Analysis with Down-weighting of Overlapping Genes* (**PADOG**) algorithm described in Tarca et al. (2012). The method can be applied to analyze any type of gene sets yet in here it is illustrated using KEGG pathways. The method computes a gene set score as the mean of absolute values of weighted moderated gene *t*-scores. The gene weights are chosen to favor genes appearing in few pathways versus genes that appear in many pathways. The significance of pathway scores is evaluated using sample/array labels permutation that preserve the gene-gene correlation structure. The package also contains a benchmark for gene set analysis in general and allows a new gene set analysis method to be benchmarked against PADOG or other existing methods (e.g. GSA). The benchmark uses 24 different data sets, each involving a disease (e.g. Colorectal Cancer) for which there is a KEGG pathway with the same name. The only assumption we make (proven to hold in Tarca et al. (2012)) is that the KEGG's pathway with the same name as the disease under the study should be found significant and/or ranked near the top by gene set analysis methods when analyzing a dataset that compares normal with diseased samples.

2 Pathway / gene set analysis with PADOG package

This document provides basic introduction on how to use the PADOG package. For extended description of the methods used by this package please consult Tarca et al. (2012).

We demonstrate the functionality of this package using a colorectal cancer dataset obtained using Affymetrix GeneChip technology and available through GEO (GSE9348) and incorporated in the KEGGdzPathwaysGEO package. This experiment contains 12 normal samples and 70 colorectal cancer samples and is described in Hong et al. (2010). The RMA preprocessed data using the **affy** package is the entry point for the **padog** function:

```
> library(PADOG)
> set = "GSE9348"
> data(list = set, package = "KEGGdzPathwaysGEO")
```

```

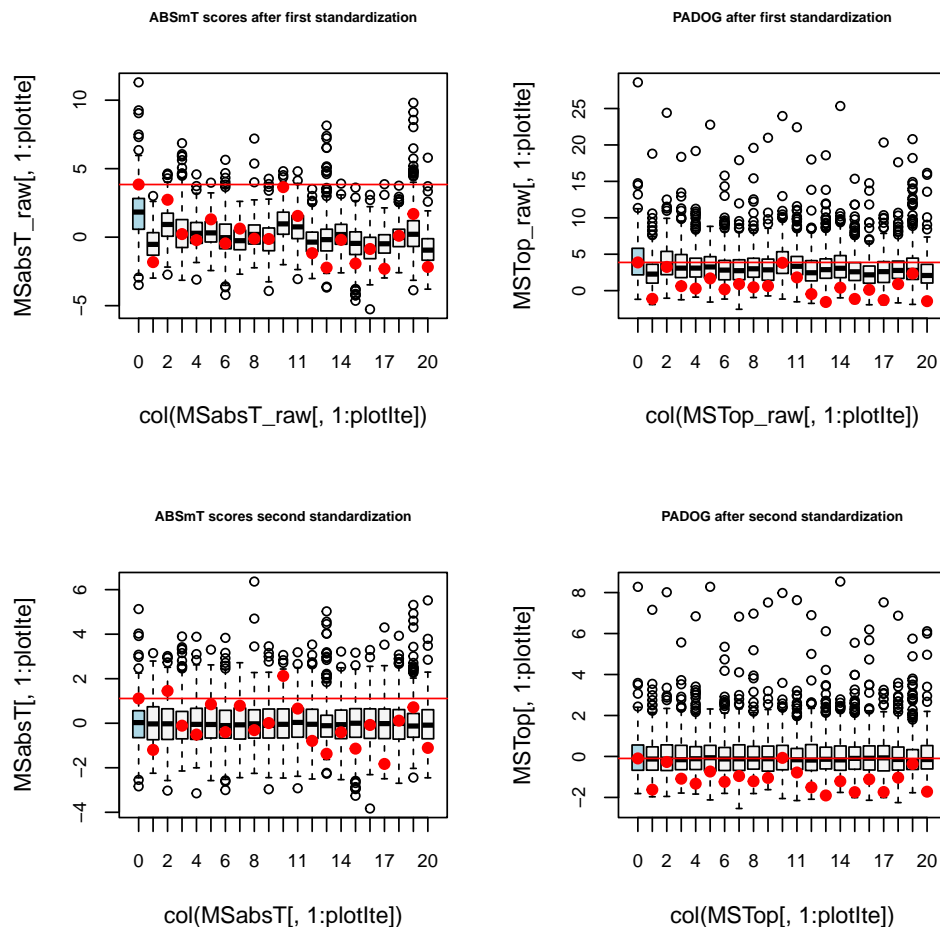
> #write a function to extract required info into a list
> getdataaslist = function(x) {
+   x = get(x)
+   exp = experimentData(x)
+   dataset = exp@name
+   disease = notes(exp)$disease
+   dat.m = exprs(x)
+   ano = pData(x)
+   design = notes(exp)$design
+   annotation = paste(x@annotation, ".db", sep = "")
+   targetGeneSets = notes(exp)$targetGeneSets
+   list = list(dataset, disease, dat.m, ano, design, annotation, targetGeneSets)
+   names(list) = c("dataset", "disease", "dat.m", "ano", "design", "annotation",
+     "targetGeneSets")
+   return(list)
+ }
> dlist = getdataaslist(set)
> #run padog function on KEGG pathways
> #use NI=1000 for accurate results and run in parallel to speed up (see below)
> myr = padog(
+   esetm = dlist$dat.m,
+   group = dlist$ano$Group,
+   paired = dlist$design == "Paired",
+   block = dlist$ano$Block,
+   targetgs = dlist$targetGeneSets,
+   annotation = dlist$annotation,
+   gslist = "KEGGRESTpathway",
+   organism = "hsa",
+   verbose = FALSE,
+   Nmin = 3,
+   NI = 50,
+   plots = TRUE,
+   dseed = 1
+ )
> myr[1:15, -c(4,5)]

```

		Name	ID
03008	Ribosome biogenesis in eukaryotes - Homo sapiens (human)		03008
04976	Bile secretion - Homo sapiens (human)		04976
01523	Antifolate resistance - Homo sapiens (human)		01523
04923	Regulation of lipolysis in adipocytes - Homo sapiens (human)		04923
00500	Starch and sucrose metabolism - Homo sapiens (human)		00500
00450	Selenocompound metabolism - Homo sapiens (human)		00450
01521	EGFR tyrosine kinase inhibitor resistance - Homo sapiens (human)		01521
03013	Nucleocytoplasmic transport - Homo sapiens (human)		03013
05206	MicroRNAs in cancer - Homo sapiens (human)		05206

00920	Sulfur metabolism - Homo sapiens (human)	00920
00910	Nitrogen metabolism - Homo sapiens (human)	00910
05222	Small cell lung cancer - Homo sapiens (human)	05222
04912	GnRH signaling pathway - Homo sapiens (human)	04912
04110	Cell cycle - Homo sapiens (human)	04110
00071	Fatty acid degradation - Homo sapiens (human)	00071

	Size	PmeanAbsT	Ppadog
03008	73	0.0200	2e-04
04976	77	0.0002	2e-04
01523	30	0.1000	2e-04
04923	57	0.0400	2e-04
00500	31	0.1800	2e-04
00450	17	0.1200	2e-04
01521	78	0.1000	2e-04
03013	101	0.0400	2e-02
05206	159	0.0200	2e-02
00920	10	0.0600	2e-02
00910	17	0.1000	2e-02
05222	92	0.1200	2e-02
04912	89	0.1200	2e-02
04110	126	0.0400	4e-02
00071	42	0.0600	4e-02



Note that for this colorectal cancer dataset it is reasonable to expect that the KEGG's Colorectal cancer pathway will be found significant and/or ranked close to the top. P_{meanAbsT} corresponds to the p-value obtained without using gene weights and hence the result is worse (higher p-value) compared to P_{padoG} obtained by using the gene weights that are inversely related to how often the genes appear across all gene sets to be analyzed. The plot created when `plots=TRUE` in the call to `padoG` shows how gene weighting improves the gene set analysis for the target pathway set via the `targetgs` argument. Figure above shows the distribution of pathway/gene set scores (y axis) for PADOG and ABSmT (which is PADOG without weights) after the first standardization (row randomization) and after second standardization (between gene sets standardization). The x axis represents the number of iterations. Iteration 0 uses true class labels, all others used randomly permuted labels. The target pathway (set via the `targetgs` argument) in this dataset is the *Colorectal Cancer pathway* (KEGG ID 05210). Its score is shown with a red bullet throughout all 4 panels, and a red horizontal line marks its level when obtained with the true class labels ($ite = 0$, x -axis). The box plots of scores obtained with the true class labels are also highlighted in blue. With PADOG, after the second standardization, the target pathway scores obtained from permutations are less frequently above the red line (0/20) (more extreme) than for ABSmT (5/20). Over 1,000 iterations, p_{PADOG} was estimated to be 0.018 while p_{ABSmT} worse, i.e. 0.138.

To run PADOG in parallel, you need to have package `doParallel` installed, and set `parallel = TRUE` in the call to `padog`:

```
> #you can control the number of cores to use via argument 'ncr'
> myr2 = padog(
+   esetm = dlist$dat.m,
+   group = dlist$ano$Group,
+   paired = dlist$design == "Paired",
+   block = dlist$ano$Block,
+   targetgs = dlist$targetGeneSets,
+   annotation = dlist$annotation,
+   gslist = "KEGGRESTpathway",
+   organism = "hsa",
+   verbose = FALSE,
+   Nmin = 3,
+   NI = 50,
+   plots = TRUE,
+   dseed = 1,
+   parallel = TRUE
+ )
> # verify that the result is the same which is a built-in feature
> all.equal(myr, myr2)
```

```
[1] TRUE
```

3 Benchmark of gene set analysis methods

The entire collection of 24 datasets available in `KEGGdzPathwaysGEO` package that can be used to benchmark PADOG against existing approaches is given in Table 1:

To illustrate how to compare PADOG against a user defined gene set analysis method we create a function called `randomF` that assigns random uniform P-values to gene sets. The user defined function has to take in 3 arguments:

1. `set`: the name of a dataset available in from the `KEGGdzPathwaysGEO` package;
2. `mygslist`: a list with elements being vectors of gene ids for a given geneset
3. `minsize`: minimum number of genes in a geneset to be considered for analysis

The output should be a dataframe with columns: ID, P, Rank, Dataset, Method for the geneset(s) considered to be relevant in that dataset (`targetGeneSets`).

```
> randFun = function(dseed, mname = "myRand") {
+   #a helper function to pass additional variables to your method
+   getdataaslist = getdataaslist
+   return(function(set, mygslist, minsize) {#your method function
```

Table 1: The 24 datasets used in the benchmark of pathway analysis methods

GEOID	Pubmed	Ref.	Disease/Target pathway	KEGGID	Tissue
GSE1297	14769913	Blalock et al. (2004)	Alzheimer's Disease	hsa05010	Hippocampal CA1
GSE5281	17077275	Liang et al. (2007)	Alzheimer's Disease	hsa05010	Brain, Entorhinal Cortex
GSE5281	17077275	Liang et al. (2007)	Alzheimer's Disease	hsa05010	Brain, hippocampus
GSE5281	17077275	Liang et al. (2007)	Alzheimer's Disease	hsa05010	Brain, Primary visual cortex
GSE20153	20926834	Zheng et al. (2010)	Parkinson's disease	hsa05012	Lymphoblasts
GSE20291	15965975	Zhang et al. (2005)	Parkinson's disease	hsa05012	Postmortem brain putamen
GSE8762	17724341	Runne et al. (2007)	Huntington's disease	hsa05016	Lymphocytes (blood)
GSE4107	17317818	Hong et al. (2007)	Colorectal Cancer	hsa05210	Mucosa
GSE8671	18171984	Sabates-Bellver et al. (2007)	Colorectal Cancer	hsa05210	Colon
GSE9348	20143136	Hong et al. (2010)	Colorectal Cancer	hsa05210	Colon
GSE14762	19252501	Wang et al. (2009)	Renal Cancer	hsa05211	Kidney
GSE781	14641932	Lenburg et al. (2003)	Renal Cancer	hsa05211	Kidney
GSE15471	19260470	Badea et al. (2008)	Pancreatic Cancer	hsa05212	Pancreas
GSE16515	19732725	Pei et al. (2009)	Pancreatic Cancer	hsa05212	Pancreas
GSE19728	-	-	Glioma	hsa05214	Brain
GSE21354	-	-	Glioma	hsa05214	Brain, Spine
GSE6956	18245496	Wallace et al. (2008)	Prostate Cancer	hsa05215	Prostate
GSE6956	18245496	Wallace et al. (2008)	Prostate Cancer	hsa05215	Prostate
GSE3467	16365291	He et al. (2005)	Thyroid Cancer	hsa05216	Thyroid
GSE3678	-	-	Thyroid Cancer	hsa05216	Thyroid
GSE9476	17910043	Stirewalt et al. (2008)	Acute myeloid leukemia	hsa05221	Blood, Bone marrow
GSE18842	20878980	Sanchez-Palencia et al. (2010)	Non-Small Cell Lung Cancer	hsa05223	Lung
GSE19188	20421987	Hou et al. (2010)	Non-Small Cell Lung Cancer	hsa05223	Lung
GSE3585	17045896	Barth et al. (2006)	Dilated cardiomyopathy	hsa05414	Heart

The 24 datasets used to compare the pathway analysis methods were obtained from GEO.

```

+ set.seed(dseed)
+ #this loads the dataset
+ data(list = set, package = "KEGGdzPathwaysGEO")
+ #extract the required info using the function defined earlier
+ dlist = getdataaslist(set)
+ #get rid of duplicates probesets per ENTREZ ID by keeping the probeset
+ #with smallest p-value (computed using limma)
+ aT1 = filteranot(esetm = dlist$dat.m, group = dlist$ano$Group,
+   paired = dlist$design == "Paired", block = dlist$ano$Block,
+   annotation = dlist$annotation)
+ #create an output dataframe for this toy method with random gene set p-values
+ mygslstSize = unlist(lapply(mygslst, function(x) {
+   length(intersect(aT1$ENTREZID, x))
+ })))
+ res = data.frame(ID = names(mygslst), P = runif(length(mygslst)),
+   Size = mygslstSize, stringsAsFactors = FALSE)
+ res$FDR = p.adjust(res$P, "fdr")
+ #drop genesets with less than minsize genes in the current dataset

```

```

+       res = res[res$Size >= minsize,]
+       #compute ranks
+       res$Rank = rank(res$P) / dim(res)[1]*100
+       #needed to compare ranks between methods; must be the same as given
+       #in mymethods argument "list(myRand="
+       res$Method = mname
+       #needed because comparisons of ranks between methods is paired at dataset level
+       res$Dataset = dlist$dataset
+       #output only result for the targetGeneSets
+       #which are gene sets expected to be relevant in this dataset
+       return(res[res$ID %in% dlist$targetGeneSets,])
+     }
+   )
+ }
> randomF = randFun(1)
> #run the analysis on all 24 datasets and compare the new method "myRand" with
> #PADOG and GSA (if installed) (chosen as reference since is listed first in the
> #existingMethods)
> #if the package doParallel is installed datasets are analyzed in parallel.
> #out = compPADOG(datasets = NULL, existingMethods = c("GSA","PADOG"),
> #   mymethods = list(myRand = randomF), gslist = "KEGGRESTpathway",
> #   Nmin = 3, NI = 1000, plots = TRUE, verbose=FALSE,
> #   parallel = TRUE, dseed = 1, pkgs = NULL)
>
> #compare myRand against PADOG on 3 datasets only
> #mysets = data(package = "KEGGdzPathwaysGEO")$results[, "Item"]
> mysets = c("GSE9348", "GSE8671", "GSE1297")
> out = compPADOG(datasets = mysets, existingMethods = c("PADOG"),
+   mymethods = list(myRand = randomF),
+   gslist = "KEGGRESTpathway", Nmin = 3, NI = 40, plots = TRUE,
+   verbose=FALSE, parallel = TRUE, dseed = 1, pkgs = NULL)
> print(out)

$summary
      Method      p geomean      p med % p.value<0.05 % q.value<0.05
PADOG   PADOG 0.012331....      0.05      33.33      33.33
myRand myRand 0.426710.... 0.353884....      0      0
      rank mean      rank med p Wilcox.      p LME coef. LME
PADOG  7.481060.... 7.102272....      1 1.0000000  0.00000
myRand 45.54924.... 36.07954....      1 0.9953854 38.06818

$rank$
$rank$PADOG
[1] 11.079545  4.261364  7.102273

$rank$myRand

```

```
[1] 64.48864 36.07955 36.07955
```

```
$pvalues
```

```
$pvalues$PADOG
```

```
[1] 0.15000 0.00025 0.05000
```

```
$pvalues$myRand
```

```
[1] 0.6204100 0.3538842 0.3538842
```

```
$qvalues
```

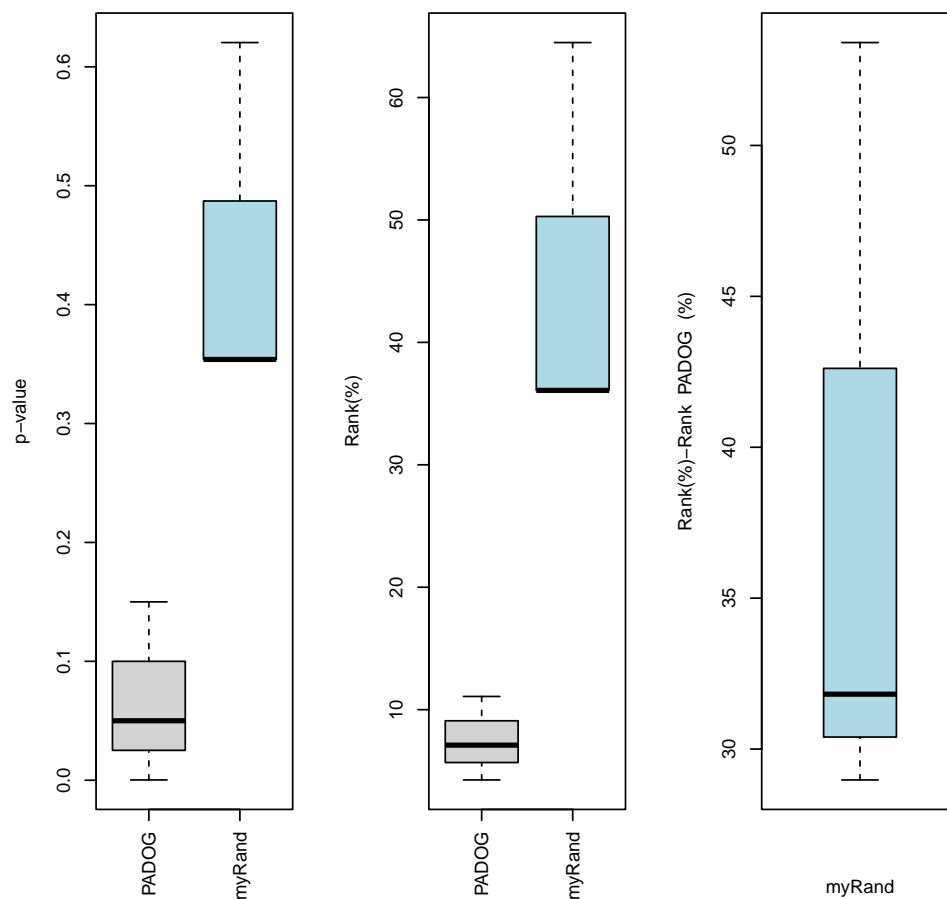
```
$qvalues$PADOG
```

```
[1] 0.930769231 0.005866667 0.676923077
```

```
$qvalues$myRand
```

```
[1] 0.9557882 0.9095673 0.9095673
```

```
>
```

Details about the meaning of the columns in the out table are given in Tarca et al. (2012). The better the method, the smaller the p-values and ranks for the target pathways, since these are supposed to be significant to their respective datasets.

References

- L. Badea, V. Herlea, S. O. Dima, T. Dumitrascu, and I. Popescu. Combined gene expression analysis of whole-tissue and microdissected pancreatic ductal adenocarcinoma identifies genes specifically overexpressed in tumor epithelia. *Hepatogastroenterology*, 55:2016–2027, 2008.
- A. S. Barth, R. Kuner, A. Bunes, M. Ruschhaupt, S. Merk, L. Zwermann, S. Kaab, E. Kreuzer, G. Steinbeck, U. Mansmann, A. Poustka, M. Nabauer, and H. Sultmann. Identification of a common gene expression signature in dilated cardiomyopathy across independent microarray studies. *J. Am. Coll. Cardiol.*, 48:1610–1617, Oct 2006.
- E. M. Blalock, J. W. Geddes, K. C. Chen, N. M. Porter, W. R. Markesbery, and P. W. Landfield. Incipient Alzheimer’s disease: microarray correlation analyses reveal major transcriptional and tumor suppressor responses. *Proc. Natl. Acad. Sci. U.S.A.*, 101:2173–2178, Feb 2004.

- H. He, K. Jazdzewski, W. Li, S. Liyanarachchi, R. Nagy, S. Volinia, G. A. Calin, C. G. Liu, K. Franssila, S. Suster, R. T. Kloos, C. M. Croce, and A. de la Chapelle. The role of microRNA genes in papillary thyroid carcinoma. *Proc. Natl. Acad. Sci. U.S.A.*, 102:19075–19080, Dec 2005.
- Y. Hong, K. S. Ho, K. W. Eu, and P. Y. Cheah. A susceptibility gene set for early onset colorectal cancer that integrates diverse signaling pathways: implication for tumorigenesis. *Clin. Cancer Res.*, 13:1107–1114, Feb 2007.
- Y. Hong, T. Downey, K. W. Eu, P. K. Koh, and P. Y. Cheah. A 'metastasis-prone' signature for early-stage mismatch-repair proficient sporadic colorectal cancer patients and its implications for possible therapeutics. *Clin. Exp. Metastasis*, 27:83–90, Feb 2010.
- J. Hou, J. Aerts, B. den Hamer, W. van Ijcken, M. den Bakker, P. Riegman, C. van der Leest, P. van der Spek, J. A. Foekens, H. C. Hoogsteden, F. Grosveld, and S. Philipsen. Gene expression-based classification of non-small cell lung carcinomas and survival prediction. *PLoS ONE*, 5:e10312, 2010.
- M. E. Lenburg, L. S. Liou, N. P. Gerry, G. M. Frampton, H. T. Cohen, and M. F. Christman. Previously unidentified changes in renal cell carcinoma gene expression identified by parametric analysis of microarray data. *BMC Cancer*, 3:31, Nov 2003.
- W. S. Liang, T. Dunckley, T. G. Beach, A. Grover, D. Mastroeni, D. G. Walker, R. J. Caselli, W. A. Kukull, D. McKeel, J. C. Morris, C. Hulette, D. Schmechel, G. E. Alexander, E. M. Reiman, J. Rogers, and D. A. Stephan. Gene expression profiles in anatomically and functionally distinct regions of the normal aged human brain. *Physiol. Genomics*, 28:311–322, Feb 2007.
- H. Pei, L. Li, B. L. Fridley, G. D. Jenkins, K. R. Kalari, W. Lingle, G. Petersen, Z. Lou, and L. Wang. FKBP51 affects cancer cell response to chemotherapy by negatively regulating Akt. *Cancer Cell*, 16:259–266, Sep 2009.
- H. Runne, A. Kuhn, E. J. Wild, W. Pratyaksha, M. Kristiansen, J. D. Isaacs, E. Regulier, M. De-lorenzi, S. J. Tabrizi, and R. Luthi-Carter. Analysis of potential transcriptomic biomarkers for Huntington's disease in peripheral blood. *Proc. Natl. Acad. Sci. U.S.A.*, 104:14424–14429, Sep 2007.
- J. Sabates-Bellver, L. G. Van der Flier, M. de Palo, E. Cattaneo, C. Maake, H. Rehrauer, E. Laczko, M. A. Kurowski, J. M. Bujnicki, M. Menigatti, J. Luz, T. V. Ranalli, V. Gomes, A. Pastorelli, R. Faggiani, M. Anti, J. Jiricny, H. Clevers, and G. Marra. Transcriptome profile of human colorectal adenomas. *Mol. Cancer Res.*, 5:1263–1275, Dec 2007.
- A. Sanchez-Palencia, M. Gomez-Morales, J. A. Gomez-Capilla, V. Pedraza, L. Boyero, R. Rosell, and M. E. Farez-Vidal. Gene expression profiling reveals novel biomarkers in nonsmall cell lung cancer. *Int. J. Cancer*, Sep 2010.
- D. L. Stirewalt, S. Meshinchi, K. J. Kopecky, W. Fan, E. L. Pogossova-Agadjanyan, J. H. Engel, M. R. Cronk, K. S. Dorcy, A. R. McQuary, D. Hockenbery, B. Wood, S. Heimfeld, and J. P. Radich. Identification of genes with abnormal expression changes in acute myeloid leukemia. *Genes Chromosomes Cancer*, 47:8–20, Jan 2008.

- A. L. Tarca, S. Draghici, G. Bhatti, and R. Romero. Down-weighting overlapping genes improves gene set analysis. *BMC Bioinformatics*, accepted, 2012.
- T. A. Wallace, R. L. Prueitt, M. Yi, T. M. Howe, J. W. Gillespie, H. G. Yfantis, R. M. Stephens, N. E. Caporaso, C. A. Loffredo, and S. Ambs. Tumor immunobiological differences in prostate cancer between African-American and European-American men. *Cancer Res.*, 68:927–936, Feb 2008.
- Y. Wang, O. Roche, M. S. Yan, G. Finak, A. J. Evans, J. L. Metcalf, B. E. Hast, S. C. Hanna, B. Wondergem, K. A. Furge, M. S. Irwin, W. Y. Kim, B. T. Teh, S. Grinstein, M. Park, P. A. Marsden, and M. Ohh. Regulation of endocytosis via the oxygen-sensing pathway. *Nat. Med.*, 15:319–324, Mar 2009.
- Y. Zhang, M. James, F. A. Middleton, and R. L. Davis. Transcriptional analysis of multiple brain regions in Parkinson’s disease supports the involvement of specific protein processing, energy metabolism, and signaling pathways, and suggests novel disease mechanisms. *Am. J. Med. Genet. B Neuropsychiatr. Genet.*, 137B:5–16, Aug 2005.
- B. Zheng, Z. Liao, J. J. Locascio, K. A. Lesniak, S. S. Roderick, M. L. Watt, A. C. Eklund, Y. Zhang-James, P. D. Kim, M. A. Hauser, E. Grunblatt, L. B. Moran, S. A. Mandel, P. Riederer, R. M. Miller, H. J. Federoff, U. Wullner, S. Papapetropoulos, M. B. Youdim, I. Cantuti-Castelvetri, A. B. Young, J. M. Vance, R. L. Davis, J. C. Hedreen, C. H. Adler, T. G. Beach, M. B. Graeber, F. A. Middleton, J. C. Rochet, and C. R. Scherzer. PGC-1?, a potential therapeutic target for early intervention in Parkinson’s disease. *Sci Transl Med*, 2:52ra73, Oct 2010.